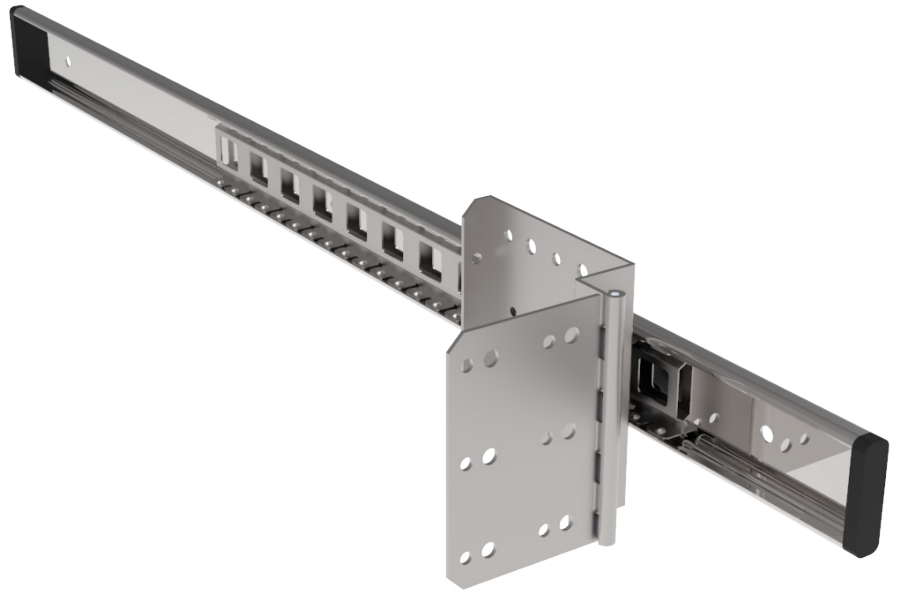


R50335 - Door Hinge on Slide

Door Hinge Mounted on Drawer Slide for Rackmount Cases



The new RR50335 is a door hinge mounted on a drawer slide that allows you to slide a trap door within a rackmount case when in use

For use with R8800 Anti-Vibration Rack Systems



The easiest way to build a shock mount rack case

With a simple panel and a slam lock, you can easily create a door that can be hidden within the case when opened

For use with 30mm / 1 3/16" extrusions

Perfect to build standard 600mm x 600mm / 23.5" x 23.5" shock mount rack cases

